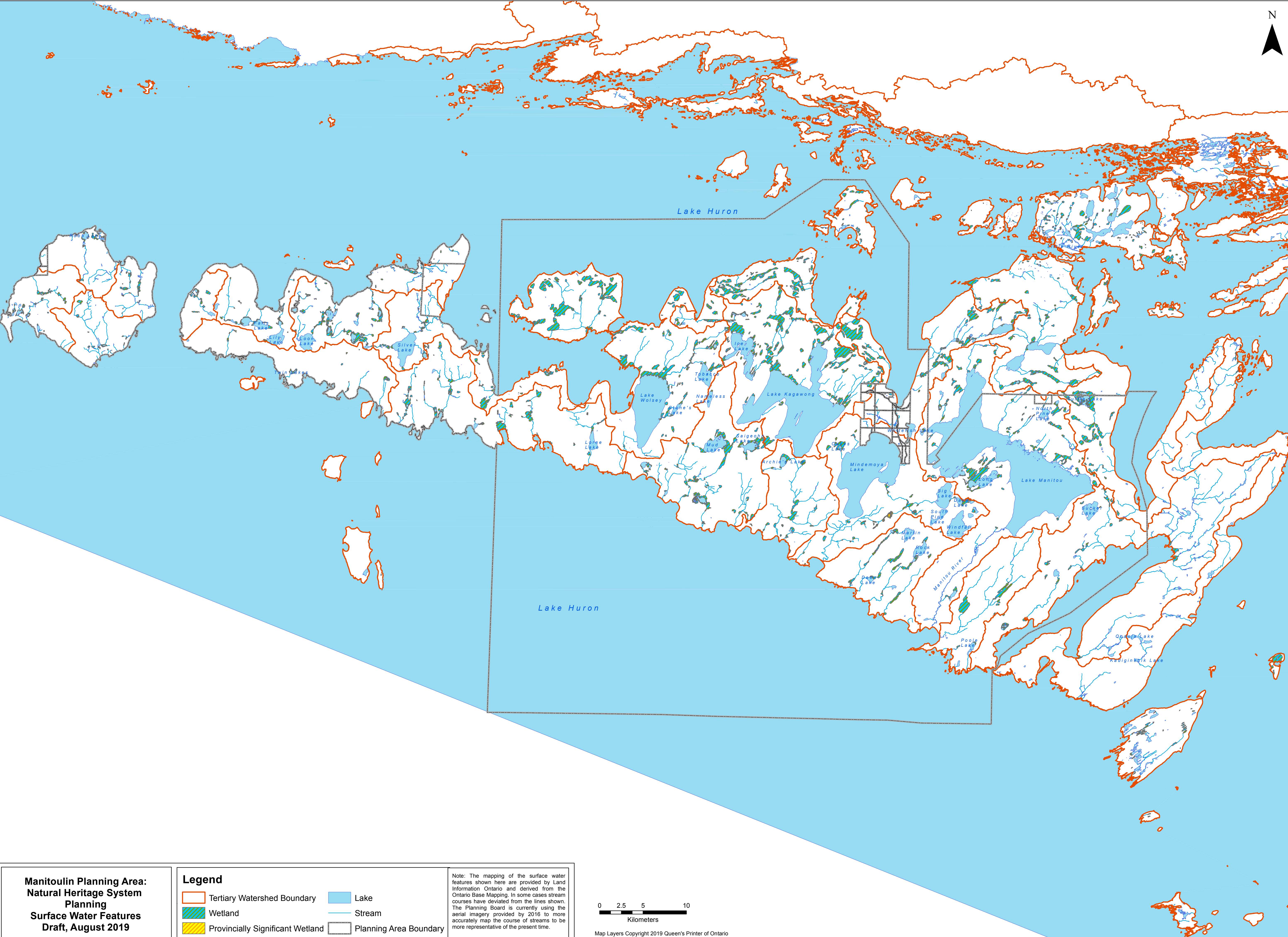


N

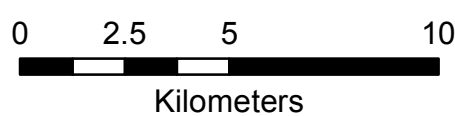


**Manitoulin Planning Area:  
Natural Heritage System  
Planning  
Surface Water Features  
Draft, August 2019**

**Legend**

- |                                  |                        |
|----------------------------------|------------------------|
| Tertiary Watershed Boundary      | Lake                   |
| Wetland                          | Stream                 |
| Provincially Significant Wetland | Planning Area Boundary |

Note: The mapping of the surface water features shown here are provided by Land Information Ontario and derived from the Ontario Base Mapping. In some cases stream courses have deviated from the lines shown. The Planning Board is currently using the aerial imagery provided by 2016 to more accurately map the course of streams to be more representative of the present time.



Map Layers Copyright 2019 Queen's Printer of Ontario